

WEBINAR

SAP BEx Sunsets in October 2025 - Backstory, Options & Opportunities





Who is APOS?

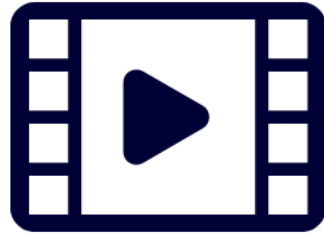
- Formed in 1992
- Enabling BI platform management, administration, migration, governance and compliance
- Simplifying, automating, extending SAP Analytics Cloud, SAP BusinessObjects, and SAP data analytics
- Strategic SDK development and consulting
- Hundreds of customers globally



Housekeeping



You will have access to the **slides** via email



You will get the **recording** within 24 hours



Download the **handouts** in the panel



Tell us how we did in the **survey**

Today's Session

Key Topics

- **BEx – Situation Today**
- **Overview of BEx Solutions**
- **Suggested Service Plan**
- **Value**
- **Replacing BEx Broadcaster Workflows**
- **Q&A** – see webinar console



Glen Leslie

SAP Solution Advisor, Business Data Cloud



Sunset of BEx Tools:

What You Need to Know Before October 2025

Glen Leslie

June 2025

PUBLIC



AGENDA

- 01** Situation Today
- 02** Overview of BEx Solutions
- 03** Suggested Service Plan
- 04** Value
- 05** APOS Solutions
- 06** Key Takeaways



AGENDA

01

Situation Today

02

Overview of BEx Solutions

03

Suggested Service Plan

04

Value

05

APOS Solutions

06

Key Takeaways



Problem Statement

- SAP BW Business Explorer (BEx) reporting tools:
 - BEx Analyzer (related solutions below) has Excel dependencies
 - MS Office 2016 and Office 2019 are the last Office versions that are supported by BEx
 - Microsoft to [end support for Office 2016 & 2019 by Oct 14th, 2025](#) - maintenance hard limit
- The following BEx solutions are impacted:

Tool	End of Support	Replacement Path	SAP note
BEx Analyzer	14 Oct' 2025	Analysis for Office	2609031
BEx Workbooks	14 Oct' 2025	Analysis for Office	2609031
BEx Broadcaster	14 Oct' 2025	BusinessObjects BI Scheduling, SAC Publication	2609031
BEx Query Designer	31 Dec' 2030	Eclipse modeling tool	3474912
BEx Web Analyzer	31 Dec' 2030	SAC	3540026
BEx Web Application Designer	31 Dec' 2030 - Extended Maintenance	SAC	3540026

Key References and Support Notes for BEx Transition

*Microsoft will **no longer provide technical support, bug fixes, or security fixes** for Office 2016 and Office 2019 vulnerabilities which may be subsequently reported or discovered. **This includes security updates which can help protect your PC from harmful viruses, spyware, and other malicious software***

https://support.microsoft.com/en-us/office/end-of-support-for-office-2016-and-office-2019-818c68bc-d5e5-47e5-b52f-ddf636cf8e16#id0ebbd=office_2016_or_office_2019_at_home

- SAP Announcements for BEx sunset was announced in 2016 [blog](#).
- Sunset of BW Business Explorer (BEx) – Added to the blog in 2018 - [SAP Note 2609031](#)

Additional Info on BW End of Mainstream End Dates

Product/Solution	Version	EOM date	Next release
SAP NetWeaver BW (< SAP BW 7.5)	NetWeaver 7.0x , 7.3 , 7.31 and 7.40	31/12/2020	BW 7.5
SAP NetWeaver BW 7.5 (On-Premise)	Netweaver 7.5 (Mainstream)	31/12/2027	None
	Netweaver 7.5 (Extended)	31/12/2030	None
SAP NetWeaver BW 7.5 (PCE)	Netweaver 7.5 (Mainstream)	31/12/2030	None
SAP BW Accelerator	SAP BW ACCELERATOR 7.2	31/12/2027	None
SAP BPC for NetWeaver	SAP SBOP PC 10.1 FOR SAP NW	31/12/2027	None
SAP BPC FOR SAP BW/4HANA	SAP BPC 11.0	31/12/2025	SAP BPC 11.1
	SAP BPC 11.1	31/12/2025	SAP BPC 2021
	SAP BPC 2021	31/12/2030	Next innovation release
SAP BW/4HANA Support until at least 2040 as per maintenance strategy update . Major releases (versions) planned, extending maintenance as per SAP policy (see roadmap)	SAP BW/4HANA 2.0	31/12/2025	SAP BW/4HANA 2.0
	SAP BW/4HANA 2021	31/12/2027	SAP BW/4HANA 2023
	SAP BW/4HANA 2023	31/12/2030	SAP BW/4HANA 2026

AGENDA

01 Situation Today

02 Overview of BEx Solutions

03 Suggested Service Plan

04 Value

05 APOS Solutions

06 Key Takeaways



BEx Solutions Overview

Excel-Dependent (Impacted by both BEx sunset and Office lifecycle)

- BEx Analyzer
- BEx Workbooks
- BEx Broadcaster

Standalone/Web-Based (Independent of Office support)

- BEx Query Designer
- BEx Queries
- BEx Web Analyzer
- BEx Web Application Designer

BEx Query Designer

- **BEx Query Designer**
 - Key tool used to build **BEx Queries** on top of SAP BW data models
 - Queries are the foundation for **BEx Workbooks**, **BEx Analyzer**, **SAP Analysis for Office** and 3rd party tools
- While BEx Query Designer remains **technically available**, it is part of the **legacy BEx suite** and not aligned with SAP's long-term roadmap.
- BEx Query Designer is not directly mapped to Microsoft Office 2016 so it is not directly impacted
- BW/4HANA supports only the **Eclipse-based BW Modeling Tools (BW-MT)**
- BW-MT ONLY available for customers operating their BW system on HANA
 - <https://me.sap.com/notes/1954168>
 - <https://me.sap.com/notes/3325422>

BEx Queries

- **BEx Queries** serve as foundational Data providers for BEx Workbooks and BEx Analyzer and widely used for building reports on SAP BW data
- BEx Queries will continue to be used as Data Sources for Analysis for Office
- **No conversion needed** for the query definitions themselves, only the front-end Workbooks require migration
- Best practice: Validate BEx Query compatibility with Analysis for Office to ensure smooth report transition
- With the introduction of **BW Modeling Tools** on HANA-based BW systems, BEx Queries are referred to as **BW Queries**

BEx Analyzer

- **BEx Analyzer** is an Excel based tool (dependent on Microsoft Office) that empowers business users to access SAP BW data through BEx Queries for informed decision-making
- Largely replaced and enhanced by SAP Analysis for Microsoft Office, offering improved usability, integration, and long-term support
- Custom logic, such as VBA scripts or macros embedded in BEx Analyzer, may require review and potential rework during migration to Analysis for Office
- **Continued usage beyond October 2025** introduces compatibility and security risks due to the end of support for Microsoft Office 2016 / 2019 and SAP support
- BW/4HANA no support of BEx Analyzer

BEx Workbooks

- **BEx Workbooks** are Excel-based reports built using **BEx Analyzer**, which allows users to consume and interact with **BEx Queries**
- BEx Workbooks are tightly integrated with BEx Analyzer
- While Workbooks may continue to function, continued usage beyond October 2025 introduces compatibility and security risks due to the end of support for Microsoft Office 2016 / 2019 and SAP support
- **Recommended Actions:** migrate to SAP Analysis for Microsoft Office (AO)
 - For customers with a **large number of BEx Workbooks**
 - Recommend engaging with our **Premium Hub CoE Team**, which has developed a **Mass conversion tool** for conversion of BEx Workbooks to AO Workbooks to streamline this process
 - For customers with **only a few BEx Workbooks**, a **manual migration** may be more practical
 - With Analysis for Office installed in Excel: File -> Analysis -> Convert BEx Workbook to convert each Workbook or test specific Workbooks.

BEx Broadcasting

- **Broadcasting / Scheduling in SAP BW systems** is used to schedule and distribute BEx Query and Workbook outputs via email, portal, or printer, leveraging different SAP broadcasting solutions such as **Pre-calculation Server, BI Java Scheduling, SAC Publication, Analysis for Office scheduling**
- **BEx Broadcaster (Pre-calculation Server) support will end in October 2025**, aligning with the broader SAP BEx sunset
- Broadcasting via **BI Java scheduling** is available but **not considered a long-term strategic option**
- **Recommended Alternatives** for scheduling and distribution:
 - **SAP BusinessObjects Business Intelligence**: Offers built-in scheduling capabilities through the SAP BusinessObjects platform, including the ability to schedule Analysis for Office Workbooks
 - **SAP Analytics Cloud**: Strategic SAP solution for modern, cloud-based report distribution and scheduling
 - **APOS Publisher for Cloud**: SAP Partner solution for expanded Analysis for Office and SAC report scheduling and broadcasting. Available via the SAP Store.
- Customers should evaluate their current broadcasting / scheduling setup and begin planning a **migration to supported, future-ready tools**.

BEx Web Analyzer / BEx Web Application Designer (WAD)

- **BEx Web Analyzer** – Reporting solution based on BEx Queries which gives fundamental BEx navigational capabilities via a Web Browser. Do not confuse this with BEx Analyzer (Excel)!
- **BEx Web Application Designer (WAD)** is a web tool that allows users to create custom web applications based on BEx Queries for delivering tailored interactive reporting and dashboards
- When you execute a BEx Web Report or BEx WAD application, the BW Java stack (hosted in the Java-based SAP NetWeaver AS) is used to display the application in a browser
- Since BEx Web and BEx WAD are independent of Excel and dependent on the BW Java, it will continue to be supported till end of 2030.
- **BEx Web Analyzer and BEx WAD and the BW Java stack** are supported with BW on HANA and BW/4HANA* until 2030, subject to the end of mainstream maintenance in 2027 and the availability of extended maintenance through 2030.

*BEx Web support on SAP BW/4HANA is on an exception basis - <https://me.sap.com/notes/2496706>

BEx Tools – Support Overview

Tool	End of Support	BW on HANA	BW/4HANA	Replacement Path
BEx Analyzer	14 Oct' 2025	Supported	Not Supported	Analysis for Office
BEX Workbook	14 Oct' 2025	Supported	Not Supported	Analysis for Office Workbook
BEx Broadcaster (Pre-Calc Server)	14 Oct' 2025	Supported	Not Supported	BusinessObjects Scheduling, SAC Publication
BEx Queries / BW Queries	na	Supported	Supported	Queries
BEx Query Designer	31 Dec' 2030	Supported	Not Supported	BW-MT Modeling tool
BEx Web Analyzer	31 Dec' 2030	Supported	Support by Exception	SAC
BEx Web Application Designer	31 Dec' 2030	Supported	Support by Exception	SAC

Licensing

BEx Workbooks and BEx Analyzer are replaced with SAP Analysis for Microsoft Office.

Please note that **SAP Analysis for Microsoft Office is a separately licensed product** and is **not included with SAP BW**. Analysis for Office licensing is available through:

- SAP BusinessObjects Business Intelligence
- SAP Analytics Cloud
- SAP BPC

How to Check in SAP BW System Using EarlyWatch Alert Report

The SAP EarlyWatch Alert (EWA) report is a proactive monitoring tool provided by SAP that delivers a comprehensive technical health check of your SAP system.

EWA is typically generated weekly based on your preference.

Check section “**Frontend Distribution**” in BW EarlyWatch Alert reports to see frontend solutions actively in use.

The availability and data for the section depends on the configuration of the EarlyWatch Alert report for BW system:

# Query executions	Analysis for Office	BEx Analyzer 7.x	BEx Web 7.x (JAVA)	BEx Broadcaster
160,812	964	926	157,926	996

Column Descriptions:

- Query Executions: Total number of BW queries executed during the week captured in the EWA report
- Analysis for Office: Number of query executions from SAP Analysis for Office frontend
- **BEx Analyzer 7.x: Number of executions via BEx Analyzer or BEx Workbooks**
- BEx Web 7.x (Java): Number of executions through the BI Java Web Interface
- **BEx Broadcaster: Number of queries executed via BEx Broadcaster (Pre-calculation) server**

Note: The statistics in EarlyWatch Alert report are extracted from the RSDDSTAT_OLAP view. Accuracy of the data relies on the proper enablement and execution of detailed statistics collection through transaction RSDDSTAT in SAP BW system, which must be activated for Web Templates, Workbooks, Queries, and InfoProviders

AGENDA

- 01** Situation Today
- 02** Overview of BEx Solutions
- 03** Suggested Service Plan
- 04** Value
- 05** APOS Solutions
- 06** Key Takeaways



Impacted Customers – Pre Assessment

- The MaxAttention CoE conducted a pre-assessment to identify customers impacted by the upcoming BEx tools sunset in October 2025, leveraging EarlyWatch Alert report statistics
- For customers who share their EarlyWatch data with SAP, proactive communication is already underway in 2025 to notify customers where sunsetting of BEx will have impact

Pre-Assessment: Understanding the Landscape Before You Migrate

Discovery

SAP MaxAttention or SAP Premium Hub CoE can conduct a **comprehensive pre-assessment** of the customer's existing BEx footprint. This includes:

- Identify the impact assessment of the BEx tools sunset
- Identify inventory of active BEx Analyzer Workbooks and Broadcaster settings
- Identifying Workbook complexity (macros, styles, custom scripts, multiple queries, variants, etc.)
- Determining which components can be migrated to Analysis for Office or SAP Analytics Cloud
- Establishing priorities and quick wins for migration

Outcome: A tailored migration roadmap that includes resource estimates, recommended tools (manual vs. automated conversion), potential risks, and business impact analysis

Ongoing Support Options: MaxAttention Services to Ensure a Smooth Transition

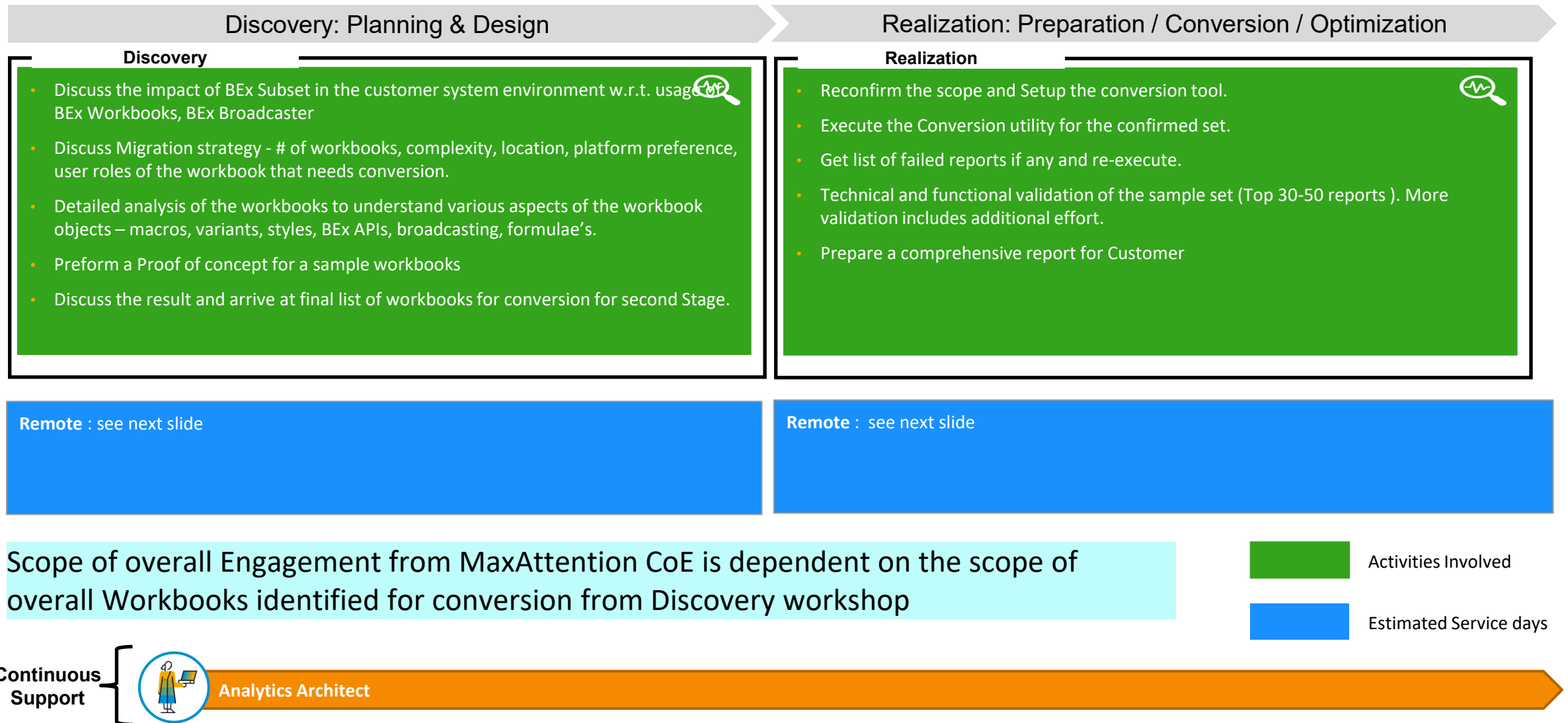
Realization: Preparation / Conversion / Optimization

SAP offers ongoing support through Premium Engagement services to ensure a successful and low-risk BEx tool conversion. These services can include:

- Conversion Workshops to align on technical readiness, business use cases, and migration expectations
- Tool Setup and Execution for the mass conversion utility, including guided execution, monitoring, and issue resolution
- Validation Support for converted Workbooks, ensuring accuracy and consistency in business-critical reports
- Post-Migration Optimization, including fine-tuning performance, adapting custom logic, and aligning with newer capabilities in Analysis for Office

Outcome: A reliable, scalable, and well-supported transition from legacy BEx tools to modern, SAP-supported reporting platforms, ensuring readiness before support deadlines and enabling innovation going forward

Suggested Service Plan



Typical Premium Engagement Effort Estimate

T-Shirt Size	XS	S	M	L	XL	XXL
Indicator (# of Workbooks to be Migrated)	1-99	100-499	500-999	1000-4999	5k-10k	10k-15k
Timeline*	< 1 week	1 week	1 - 2 weeks	< 2 weeks	2 - 3 weeks	3 - 4 weeks

Based on our testing, it takes about 1 hour to convert 100 reports (~ 36 sec per Workbook)

This tool provides a great deal of value to our customers as it can reduce the time by 6x – 8x compared to manually converting BEx Analyzer Workbooks to AO Workbooks

Assumptions:

- It is a simple Workbook with 1-2 data sources
- If Workbook refresh settings is on, refresh time is outside the scope of the conversion utility

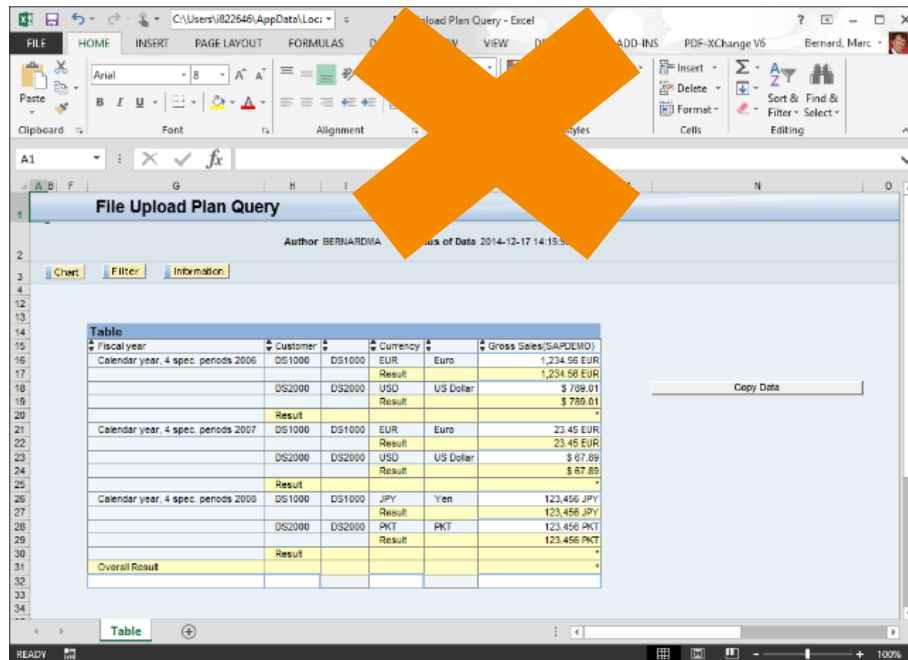
Real timeline may differ from estimation based on exact business requirements. An accurate timeline will be evaluated in the Discovery phase

If BW resource is required, estimates will increase accordingly

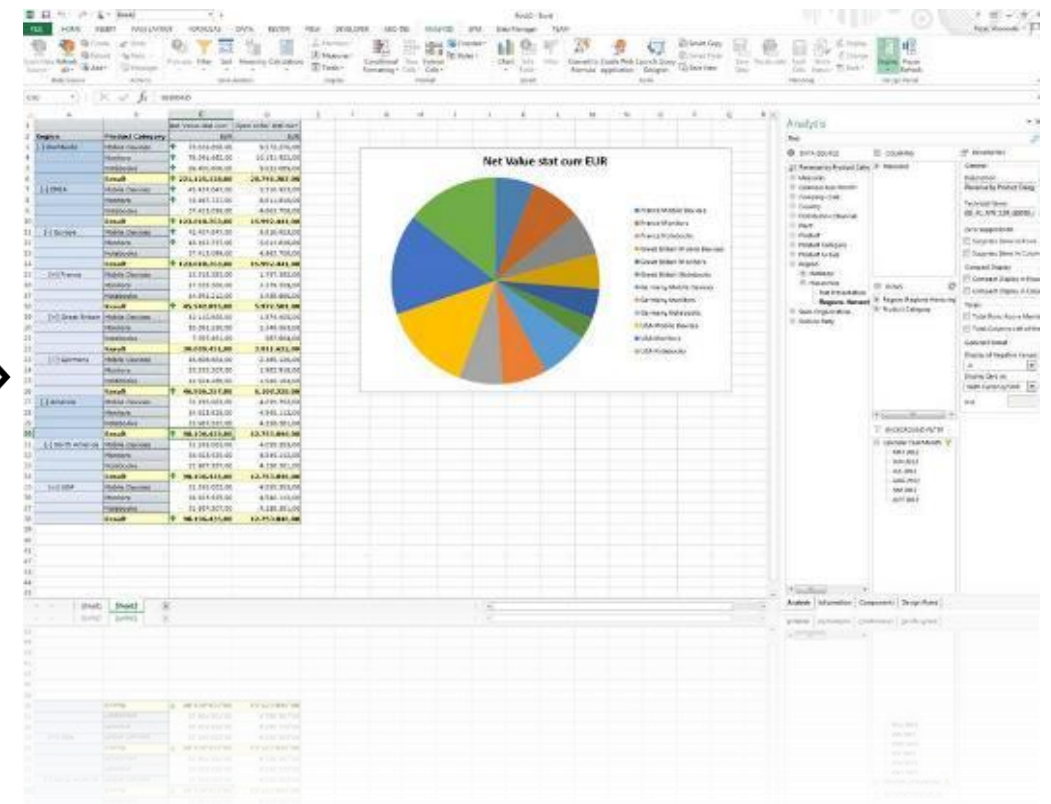
Above calculation doesn't include time and effort required for assessment, preparation, and post conversion task

BEx Workbook to AO Workbook Conversion

BEx Workbook



Analysis for Office Workbook

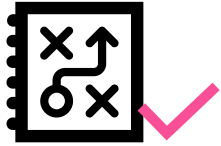


AGENDA

- 01** Situation Today
- 02** Business Challenges
- 03** Suggested Service Plan
- 04** Value
- 05** APOS Solutions
- 06** Key Takeaways

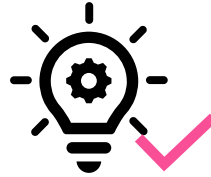


Benefits



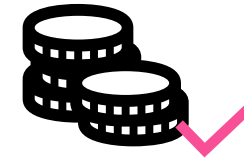
Value Adding

- Fast and powerful solution, including pre-checks, backups
- Customer adopted strategy
- Expert knowledge and best practices regarding performance aspects



Quick

- Clearly defined scope
- Tool-based mass migration
- Enhances SAP standard functionality
- Up-to 6x – 8x times faster than manual effort

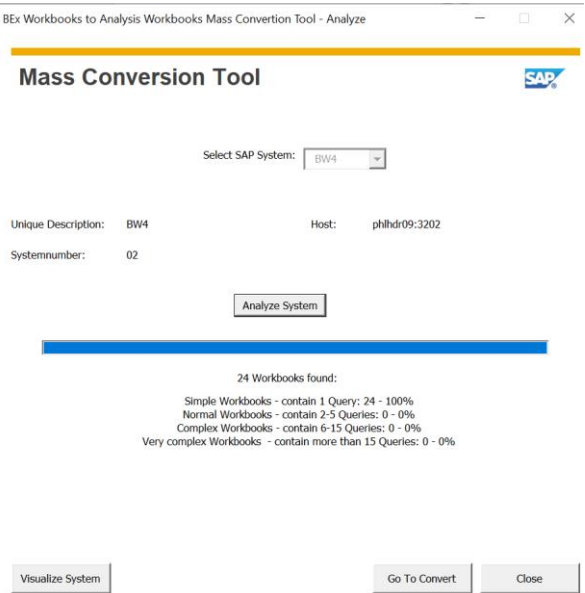


Costs

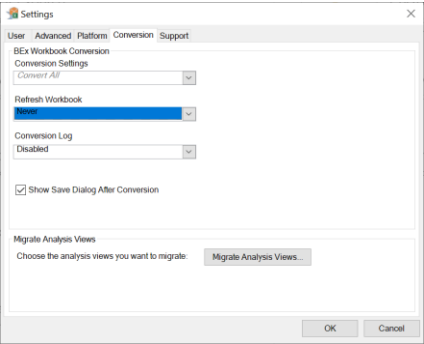
- Attractive fixed-price service
- Different sizes/packages
- Reduced resource requirement from IT

Automated Process of “Mass Conversion”

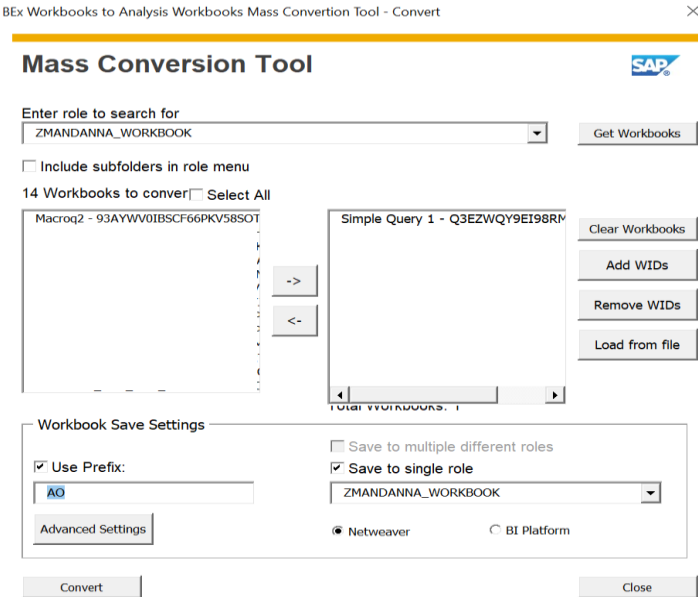
Analyze the Workbooks based on queries



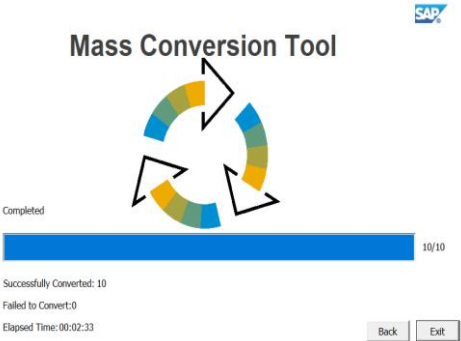
Use the AO conversion settings



Offers advanced options for conversion



Conversion status



20210318 01.03.20 PM - ConversionLog.txt - Notepad

File Edit Format View Help

3/18/2021 1:05:32 PM

Number of workbooks saved: 10

The workbooks that converted successfully were:

Workbook Name	Contains Macros
ZZ_XT9YIW2MCIKSV0XLBWUFVQSS	Contains Macros
ZZ_30HSV5N1Z3RBARAN44DO0I68I	Does Not Contain Macros
ZZ_EXCHTIWU9CB9544FH2EG34T8V	Does Not Contain Macros
ZZ_OKZBOR09LRI4T2ROBSHKG9XAS	Does Not Contain Macros
ZZ_43BHS7VYU925T5SVDI0Y26SCY	Does Not Contain Macros
ZZ_02KM0F9ADRZES0Z3GUTJAWMOU	Does Not Contain Macros
ZZ_3F0325BFXHH7FDPIMLRUVVE9K	Does Not Contain Macros
ZZ_07MRE4U17TF4PPT354YXYVEFS	Does Not Contain Macros
ZZ_Q4D5YPZGCM73KRFBXZU37F300	Contains Macros
ZZ_BCBA3K38KDERKNVLA8XIL10RU	Does Not Contain Macros

Number of workbooks that failed to save: 0

Additional Enhancements

Additional enhancement options are made available (via this tool) during the conversion process, in order to reduce the manual effort of updating the AO reports after conversion.

BEx Workbooks to Analysis Workbooks Mass Conversio... — □ ×

Advanced Conversion Settings

☒ Add InfoFields

Specify Fields

☐ Add Images or Shapes

☐ Add Title in Merged Cells

☐ Adjust Title in Default Text Box

☒ Change Background Color

☐ Entire Sheet

Color

A2:M2

☐ Clear Cells, Rows or Columns

☐ Delete Columns

☐ Delete Rows

☐ Delete Specific Shapes

☐ Delete All Shapes and Images not Containing Macros

☐ Delete Chart Button and Graph Sheet

☐ Delete Filter Button and Columns

☐ Delete Info Button and Rows

☐ Insert Rows

☐ Insert Columns

☒ Make Converted Workbook 64bit Compatible(Recommended)

Specify InfoFields and destination cells

InfoFields and Cells

☒ Query Created By

O2

P2

☐ Data Source Name

☐ Last Update Date

☐ Key Date☐ Effective Filters☐ Variables

Horizontal Align

Vertical Align

Date Format

Font Settings

Titles

Values

Clear All

Save & Close

Pre-requisites

Product	Product version	Component
SAP Business Warehouse (BW)	SAP BW 7.01 Support Package 11 or higher	SAP BEx 7.X Query Designer revision 570 or higher
SAP GUI	Version 7.30 SP05 or higher	NetWeaver 7.x BW/BI Add-On Front-End Patch (FEP) 501 for GUI 7.30 or higher
.NetFramework	Microsoft .NET Framework 4.5 Redistributable Package	
MS Office	Excel supported after Oct. 2025	EXCEL

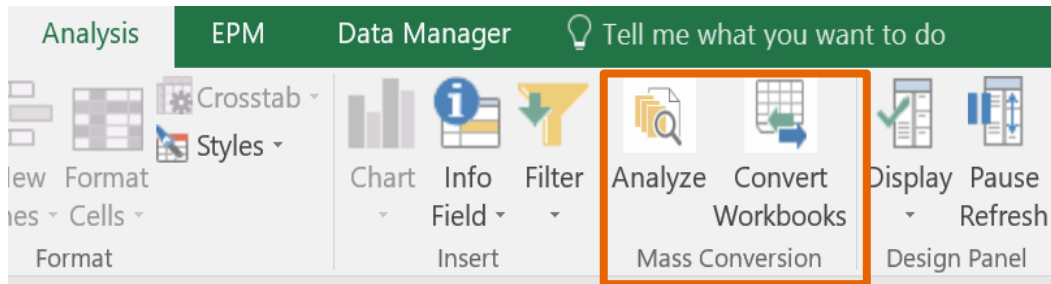
Preferred access: WTS systems with the above software installed. We will install custom AO along with the conversion logic.

Other approach: SAP GUI and RFC access. This would be a remote access to BW system from SAP network and there will be additional network overhead which may cause further delays.

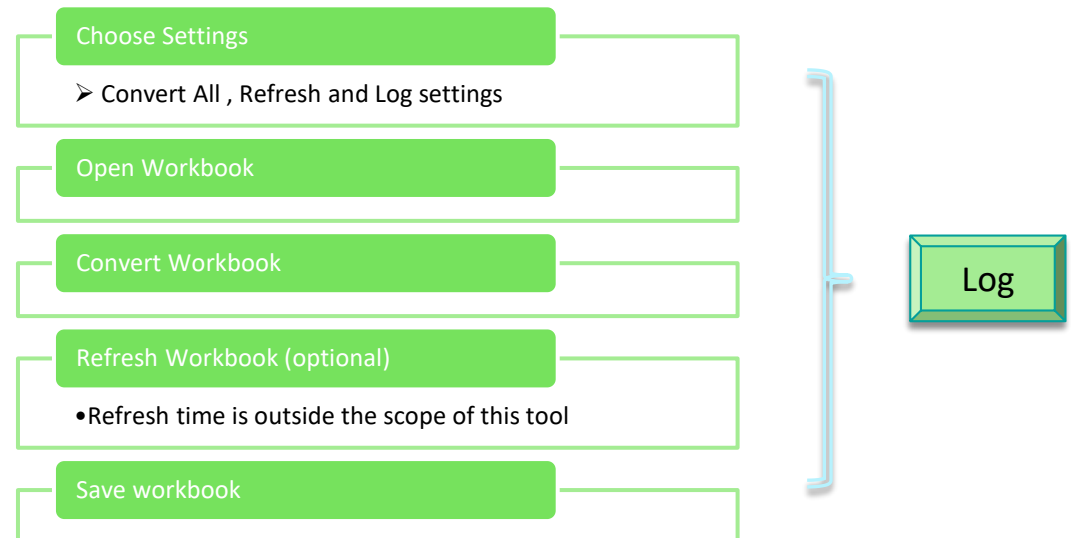
Installation and Setup

- Install a special version of Analysis for Office
- Convert the Workbook with custom VBA code implemented for mass conversion
- Integrate custom Java program for publishing to BI platform

Runs on a local computer:



Steps involved during the conversion process:



Conversion Limitation in Current Version of Utility

BEx Analyzer Object	Analysis Object
Styles	The style is not converted. The converted workbook is displayed with the default Analysis style set
Item: List of Conditions	The list is not converted. The conditions are available as BEx conditions in Analysis and can be activated and deactivated with the menu
Item: List of Exceptions	The list is not converted. The exceptions are available as Conditional Formatting in Analysis and can be activated and deactivated with the menu.
VBA API	Customer-specific code is not converted, but it is available in the workbook after the conversion.
Navigation Pane	No conversion. You can use the design panel in Analysis.
Item: Dropdown Box (displaying query views)	No conversion.
Item: Button	No conversion.

FAQs

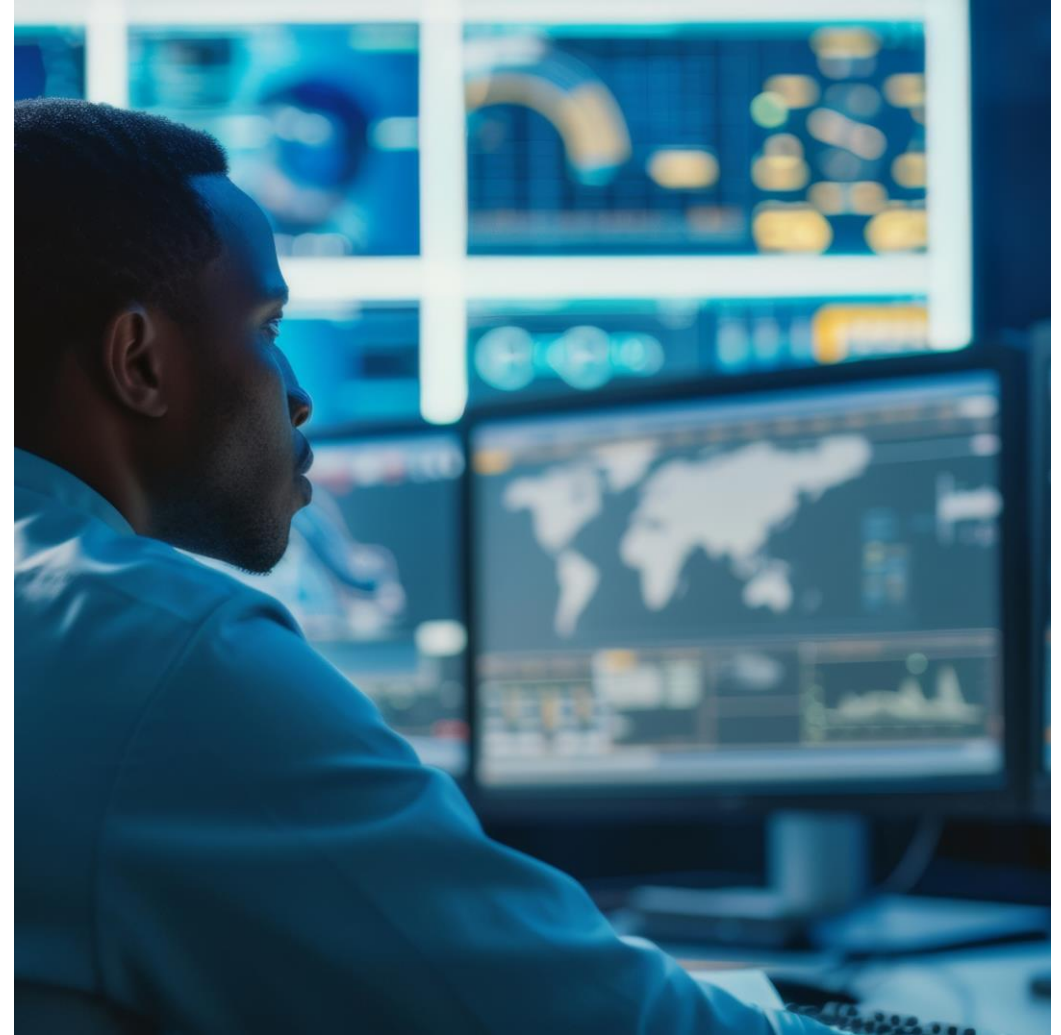
- Does it support save to BI Platform?
 - Yes it supports save to BI Platform but in current version the connection points to BW GUI connection, pointing to BI platform OLAP connections is not complete.
- Does it support save to SAC Platform
 - Not currently but can be analyzed on a project basis.
- Will you uninstall the software or can we re-use the conversion tool post migration workshop?
 - We will uninstall the software post migration activity, even if we don't uninstall it doesn't work as it's a combination of custom software along with the coding that we have built which makes the conversion utility work.
- Is Assessment necessary or should we always have Assessment if we need more conversion after our initial migration service?
 - Yes Assessment is a mandatory for the conversion, as we need to access the Workbook in scope for conversion. However If we are involved with the customer more than once for additional conversion, the effort for assessment will be less than the initial assessment.
- We are using Broadcasting feature in BW, can we use the same in AO?
 - You can use Scheduling feature in AO, but currently this is only supported if you save Workbook to BI Platform.
 - Key scenario where APOS could assist.

AGENDA

- 01** Situation Today
- 02** Overview of BEx Solutions
- 03** Suggested Service Plan
- 04** Value
- 05** APOS Solutions
- 06** Key Takeaways



Replacing BEx Broadcaster Workflows



Who Receives BEx Broadcaster Reports



Executives



Customers



Finance Teams



Store Managers



Suppliers



Sales Teams

SAP Report Scheduling & Broadcasting Solutions

- SAP BEx Broadcaster
- SAP BusinessObjects Publications
- SAP Analytics Cloud Publications



SAP Report Scheduling & Broadcasting Solutions

- ~~SAP BEx Broadcaster~~ - not supported after October 2025
- SAP BusinessObjects Publications - many want to reduce reliance on BusinessObjects
- SAP Analytics Cloud Publications - important limitations for scheduling and broadcasting
- **APOS Publisher for Cloud** - flexible options for expanded scheduling and broadcasting



SAP Analytics Cloud Publications

What is SAC Publications?

SAP Analytics Cloud (SAC) Publications are a feature that allows users to schedule, create, and distribute reports or analytical content in a variety of formats, including PDFs or PPT files. Publications can be sent to specific recipients or groups, helping to automate the delivery of business insights to stakeholders.



SAP Analytics Cloud Publications

SAC Publications Example:

- Schedule SAC Story to Email
- Send as PDF as attachment
- Customize email body
- Add link to story in email

Built-in SAC scheduling capabilities are limited

The image displays two screenshots from the SAP Analytics Cloud interface. The top screenshot shows the 'Schedule Publication' dialog box, which allows users to share a story via email. It includes fields for 'Event Name' (set to 'Customer Shipping Reports'), 'Start Date' (Feb 7, 2025, 12:05), 'File Type' (PDF), 'Email Subject' (Customer Shipping Reports), and 'Email Message' (Hello,). There are also buttons for '+ Add Recurrence', 'Check Availability', and a rich text editor for the email body.

The bottom screenshot shows the 'Help Portal' page for 'SAP Analytics Cloud'. It provides information about 'Bookmark' and 'Scheduling publication'. A table titled 'Formats supported' lists the supported formats for different story modes. A 'Note' indicates that users can also share a link to the story while scheduling a publication. Below the table, a list of 'Scheduling capabilities' is provided.

Formats supported	For stories in classic mode	PDF and PowerPoint (.pptx)
	For stories in Optimized View Mode, Optimized Design Experience, and Optimized Story Experience	PDF, CSV, and PowerPoint (.pptx)

Note
You can also share a link to the story while scheduling a publication.

Scheduling capabilities	Value
Delivery channel	E-mail
Maximum email size	25 MB
Maximum number of SAP Analytics Cloud recipients	Infinite
Maximum number of Non-SAP Analytics Cloud recipients	Three
Content you can schedule	Stories along with the Bookmarks, and Analytic Application
Recurrence interval	Hourly, Daily, Weekly, and Monthly
Scheduling locations	Favorites menu, Featured files, the Files page, or from within the story itself

Reports for Broadcasting with SAC Publications

SAP Analytics Cloud Stories

- Limited scheduling volume based on licensing
- Limited scheduling to external recipients
- No conditional broadcasting (trigger/event)
- Hard to configure dynamic recipients, tailored distribution per recipient
- Email only as a destination

SAP Analytics Cloud Applications

- Not supported in SAC Publications

SAP Analysis for Office

- No scheduling available for SAP Analysis for Office (AfO) in SAC Publications

Reports for Broadcasting – SAP Analysis for Office (AfO)

Analysis for Office Broadcasting

- Users coming from BEx Broadcaster need scheduling solution for AfO
- Heavily dependent on SAP BusinessObjects for scheduling
- Can store AfO reports in SAC but cannot schedule
- APOS collaboration with SAP AfO Product Team to support AfO broadcasting

Drug Manufacturer	AVG Item Cost	AVG Item Sale Price	Quantity Sold	Production Cost	Sales Revenue	Sales Margin
NexaPharm	41	202	86,703	3,544,212	17,460,188	13,915,976
BioVita Solutions	40	116	74,679	3,028,856	8,740,499	5,711,643
CureQuest Labs	39	134	57,732	2,275,271	7,713,170	5,437,898
Helixion Therapeutics	39	120	60,954	2,453,353	7,317,707	4,864,354
Aegia Biopharma	30	382	17,546	534,935	6,701,973	6,167,038
Zenith Medica	44	127	52,579	2,338,758	6,562,315	4,223,558
Vividex Pharmaceuticals	38	138	47,328	1,769,030	6,541,522	4,772,492
ClearPath Therapeutics	37	158	36,411	1,319,754	5,754,821	4,435,067
NovaCare Inc.	39	141	40,828	1,605,185	5,745,613	4,140,429
Prominence Biologics	41	132	40,322	1,653,707	5,315,695	3,661,988
SerenoPharma	40	77	59,633	2,369,609	4,611,395	2,241,786
QuantumHeal	36	128	33,933	1,231,562	4,348,578	3,117,016
Vitalis Pharma	37	129	31,918	1,197,061	4,098,955	2,901,894
Elevate Health Sciences	42	116	32,324	1,352,713	3,771,438	2,418,725
OptiMed Innovations	36	157	20,190	720,072	3,175,603	2,455,531
Ethos Therapeutics	39	157	11,598	453,483	1,773,841	1,320,358
Solara Biotech	53	211	8,027	430,469	1,691,742	1,261,273
PrimeLife Pharmaceuticals	33	118	14,037	450,097	1,653,631	1,203,534
Horizon Therapeutics	42	109	13,630	576,144	1,479,260	903,116
Tall Labs Pharma	39	161	4,945	190,863	793,804	602,941
Overall Result	39	151	745,317	29,495,135	105,251,751	75,756,615

Tot. Production Cost: \$29,533,343
Total Sales Revenue: \$105,805,254
Total Sales Margin: \$76,271,909
Number of Customers: 8,606
States Served: 22
Number of Sales: 25,425
Period displayed: from 2019 to 2020
Branches: all

APOS Publisher for Cloud

APOS Publisher for Cloud is a software solution that automates the generation of tailored versions of report content from SAP Analytics Cloud (SAC) and SAP Analysis for Office (AfO), and then distributes that analytics content out to targeted users and locations.

The solution functions to broadcast personalized analytics to the right people, at the right time, and in the right format.



APOS Publisher for Cloud - Automated SAP Report Broadcasting

- SAP Analytics Cloud – Reports/Stories
- SAP Analytics Cloud - Analytical Applications
- SAP Analysis for Office Reports



APOS Publisher for Cloud



Dynamic Rules

Dynamically generate tailored report distribution using dynamic recipient data



Filters/Variables

Apply filters and variable values on an individual basis so everyone is getting their own data



Formats & Destinations

Supporting wide range of reporting formats and flexible delivery destinations



Consolidation of Multiple Reports

Reduce overload of emails/reports by consolidating into one single report



APOS Publisher for Cloud



Export Options

Allow multiple export formats in a single email (e.g. XLS, PDF and PPT)



Widget Level Broadcasting

Target specific widgets on a given SAC Story page



Security Integration

Supporting the various ways SSO is configured on customer's landscape



APOS Publisher for Cloud



Integrated Scheduling

Web-based scheduling accessible from a browser



Conditional Broadcasting

Trigger/event based scheduling based on specific conditions/thresholds

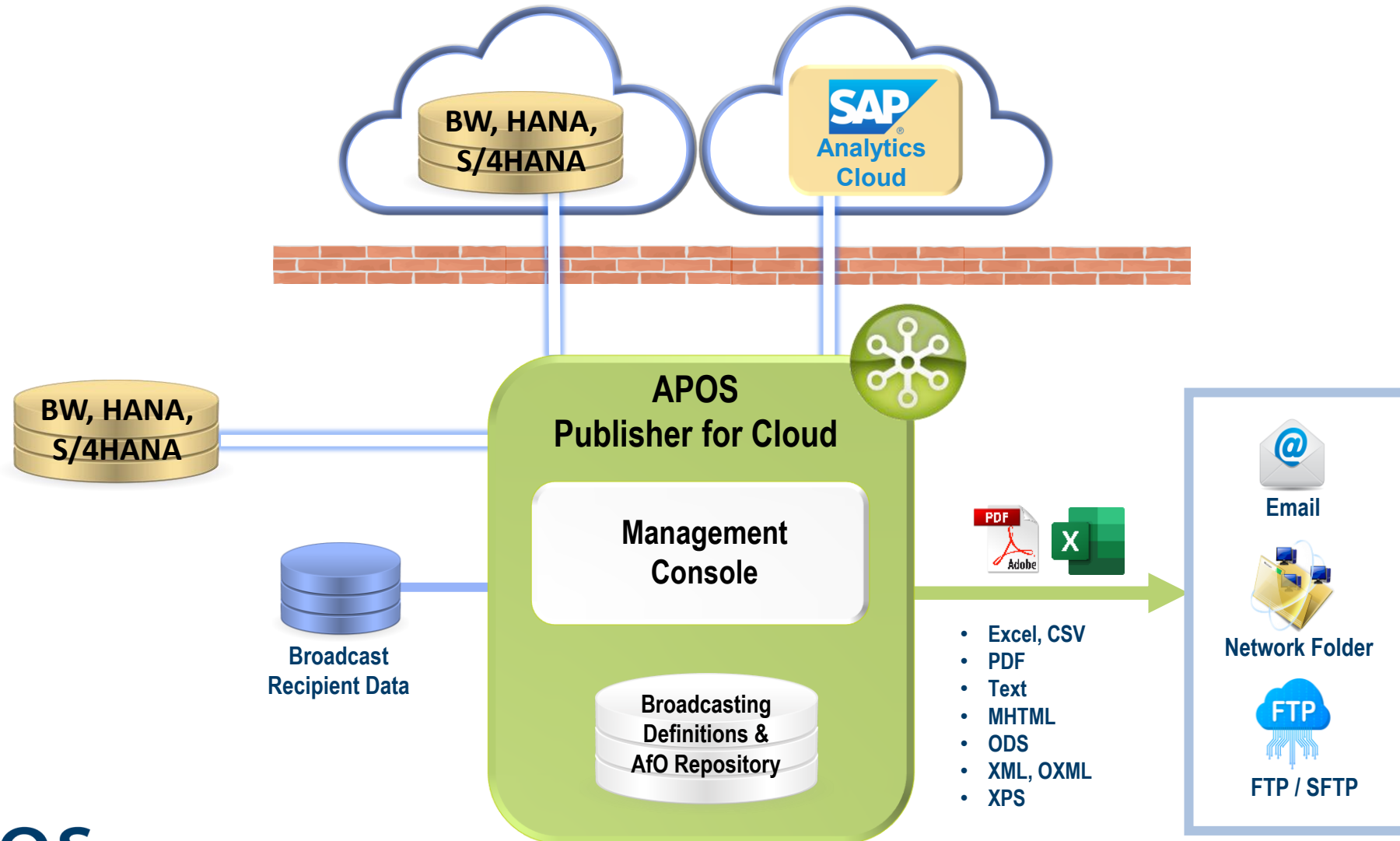


Monitoring & Alerts

Monitoring distribution processes and receive notifications about the status



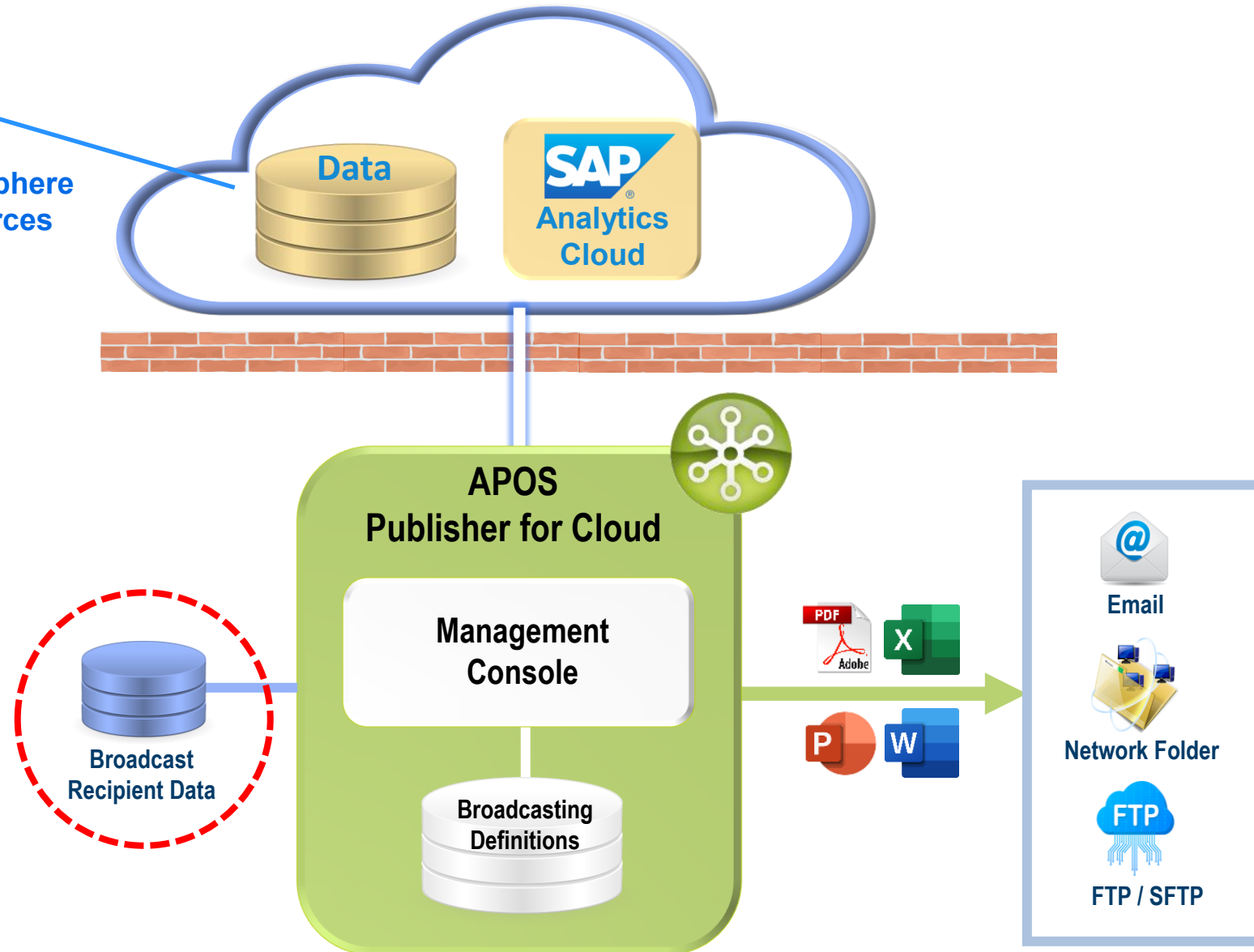
APOS Publisher for Cloud – Analysis for Office Reports



APOS Publisher for Cloud – SAP Analytics Cloud Reports

Any SAC Story

- Live & Import Data
- S/4HANA, BW, Datasphere
- SAP & Non-SAP Sources

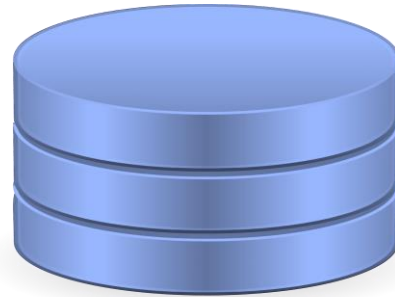


Broadcast Recipient Data

A data source provided by customer which contains values to drive dynamic report filtering and control report distribution.

Any ODBC / OLE DB data source

- Excel
- SQL Server, Oracle, etc
- S/4HANA, Datasphere, BW, BW/4HANA

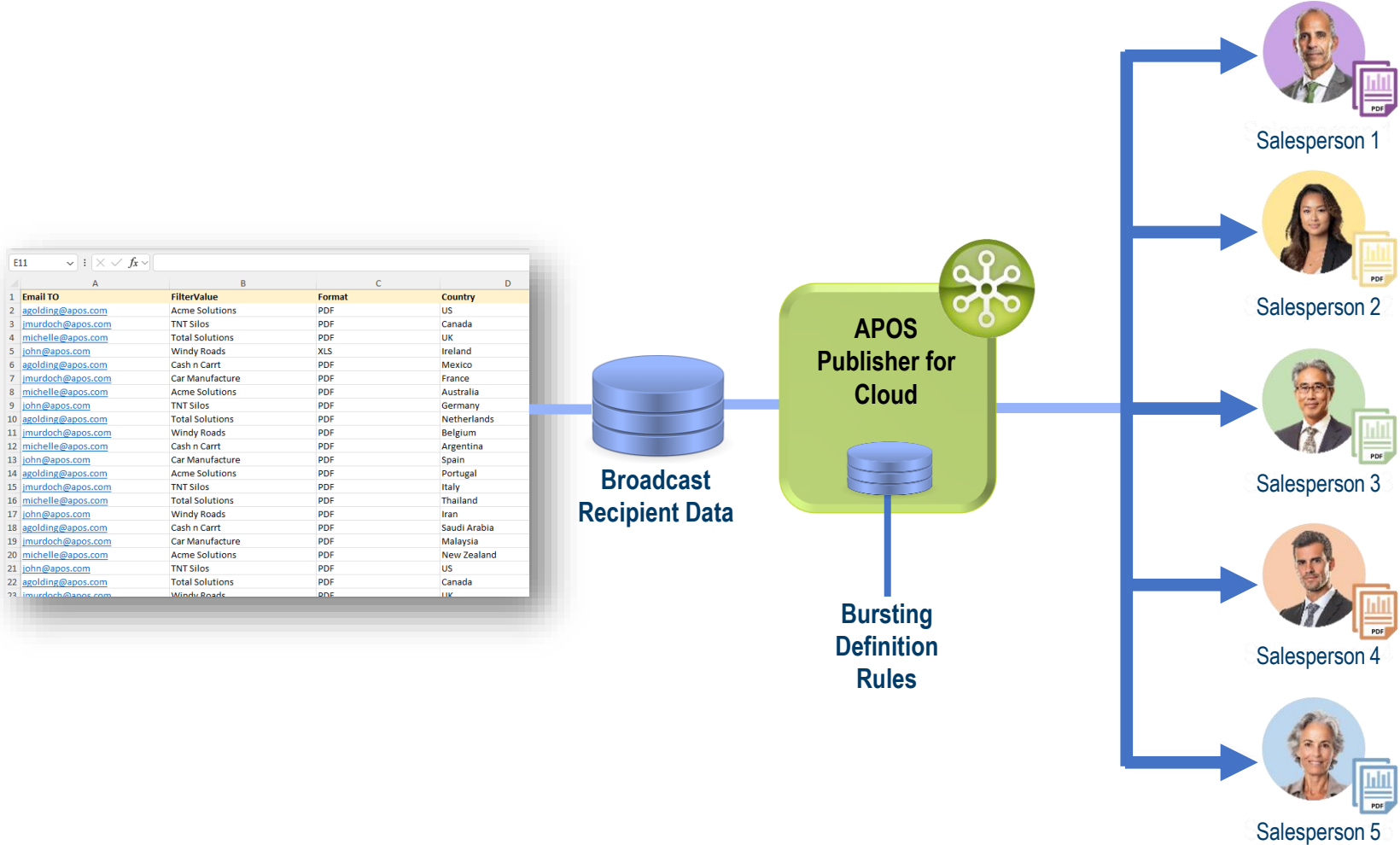


**Broadcast
Recipient Data**

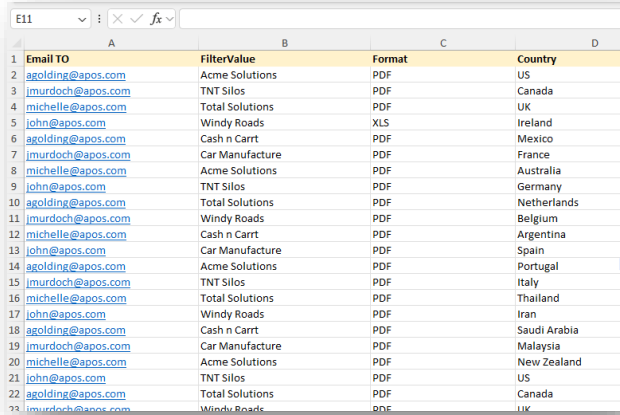
The Publisher for Cloud bursting definition creates the framework and rules for the broadcast.

The Broadcast Recipient Data drives the specific values of the broadcast.

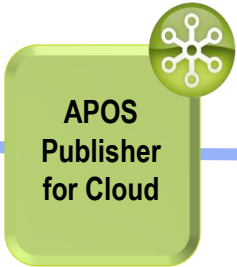
Dynamic Recipient Broadcasting



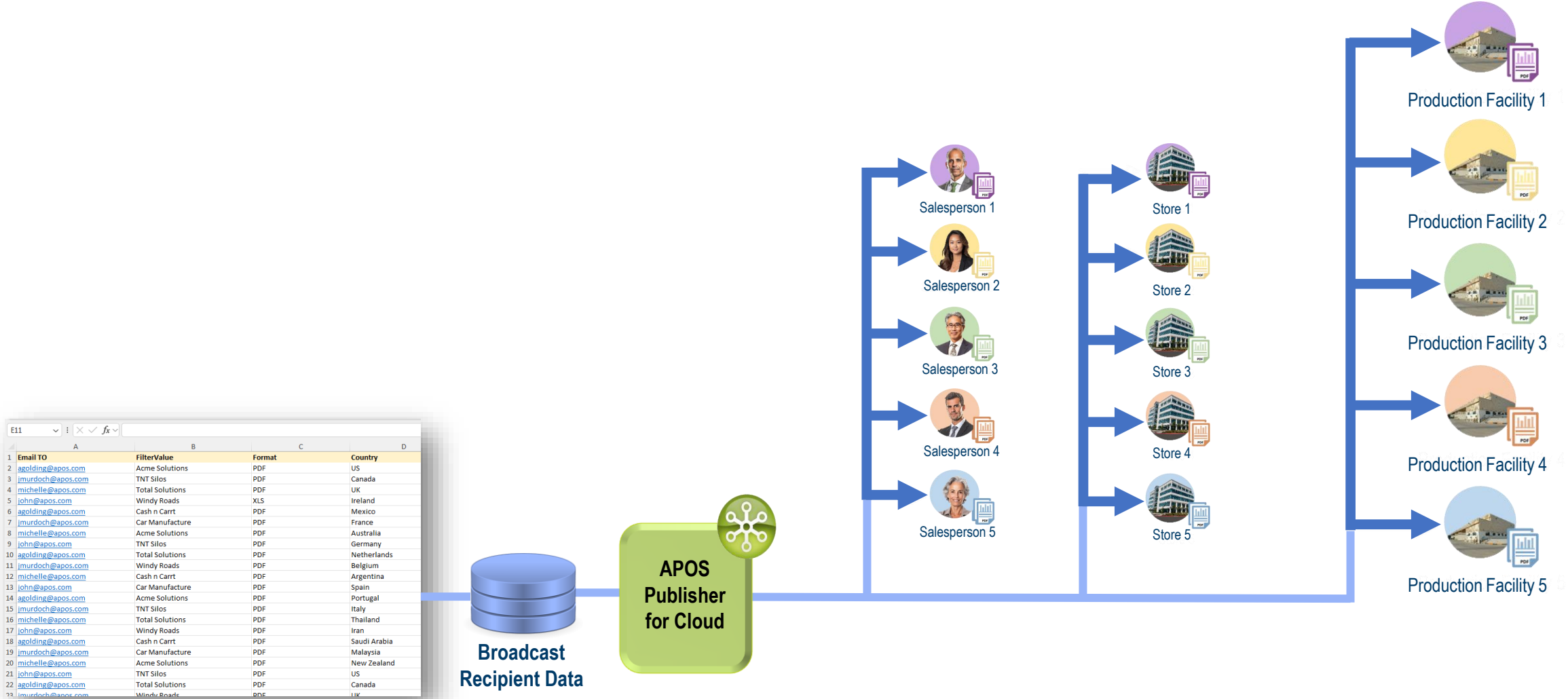
Dynamic Recipient Broadcasting



	A	B	C	D
1	Email TO	FilterValue	Format	Country
2	agolding@apos.com	Acme Solutions	PDF	US
3	imurdoch@apos.com	TNT Silos	PDF	Canada
4	michelle@apos.com	Total Solutions	PDF	UK
5	john@apos.com	Windy Roads	XLS	Ireland
6	agolding@apos.com	Cash n Carrt	PDF	Mexico
7	imurdoch@apos.com	Car Manufacture	PDF	France
8	michelle@apos.com	Acme Solutions	PDF	Australia
9	john@apos.com	TNT Silos	PDF	Germany
10	agolding@apos.com	Total Solutions	PDF	Netherlands
11	imurdoch@apos.com	Windy Roads	PDF	Belgium
12	michelle@apos.com	Cash n Carrt	PDF	Argentina
13	john@apos.com	Car Manufacture	PDF	Spain
14	agolding@apos.com	Acme Solutions	PDF	Portugal
15	imurdoch@apos.com	TNT Silos	PDF	Italy
16	michelle@apos.com	Total Solutions	PDF	Thailand
17	john@apos.com	Windy Roads	PDF	Iran
18	agolding@apos.com	Cash n Carrt	PDF	Saudi Arabia
19	imurdoch@apos.com	Car Manufacture	PDF	Malaysia
20	michelle@apos.com	Acme Solutions	PDF	New Zealand
21	john@apos.com	TNT Silos	PDF	US
22	agolding@apos.com	Total Solutions	PDF	Canada
23	imurdoch@apos.com	Windy Roads	PDF	UK



Dynamic Recipient Broadcasting



Customer Success Profile

A large European company that is an international leader in design, production and sale of bathroom products around the world, with 80+ production sites and 20000 employees globally

Landscape & Core Challenge

- **SAP BW 7.X** • **SAP BW 4/HANA**
- Replace SAP BW with SAP BW/4HANA
- Replace BEx broadcasting capabilities
- Broadcast both SAP Analysis for Office reports and SAP Analytics Cloud reports

BEx Reports to AfO + SAC



Solution Requirements

- SAP Analysis for Microsoft Office scheduling and broadcasting
- SAP Analytics Cloud scheduling and broadcasting
- Easy-to-use schedule creation and execution
- Filtering for personalized email
- Microsoft Excel as an email attachment
- Email delivery monitoring and remediation

Outcomes & Customer Success

With deployment of APOS Publisher for Cloud, the company was able to:

- Easily personalize reports and broadcast them to recipients
- Achieve required report broadcasting volumes
- Schedule SAP Analytics Cloud and SAP Analysis for Office reports
- Monitor report delivery and achieve granular control of delivery
- Include Microsoft Excel files as email attachments



Customer Success Profile

Global agricultural supply management company connecting producers and consumers, supplying sustainable and quality-controlled agricultural products

Landscape & Core Challenge

• SAP BW 7.5 • BEx Analyzer • BEx Broadcaster • Analysis for Office

Business unit Cost Center managers and other stakeholders relied on delivery of BEx reports related to financial transactions, business planning and forecasting.

Company lost BEx Analyzer/BEx Broadcaster due to move to BW/4HANA. Analysis for Office could replace BEx Analyzer, but needed to replace BEx Broadcaster capabilities.

No desire for a new deployment of SAP BusinessObjects, and were not quite ready for SAC.

Analysis for Office Standalone



Solution Requirements

- Distribute AfO reports to Cost Center Managers
 - to email and network file locations; in Excel format
 - based on dynamic variables; based on S/4HANA filters
- Broadcasting processes managed by business users rather than IT
- Provide end-to-end management of broadcasting processes including error processing and status reporting
- Self contained solution with built-in report repository

Outcomes & Customer Success

- Timely snapshot of KPIs for Cost Center managers who do not have access to SAP
- Exception type reports allowing managers to take corrective action
- Web UI allows business users to schedule and trigger report broadcasts





APOS PUBLISHER FOR CLOUD

*Getting personalized analytics to the right people,
at the right time, in the right format*



Personalized Distribution



Strategic Timing



Tailored Format



Scalability



Dynamic Flexibility



Secure Collaboration

AGENDA

- 01** Situation Today
- 02** Overview of BEx Solutions
- 03** Suggested Service Plan
- 04** Value
- 05** APOS Solutions
- 06** Key Takeaways



Next Steps

- **Assess Current BEx Usage:** Identify where and how BEx Analyzer, BEx Workbooks and BEx Broadcaster are being used across the organization at customers.
- **Impact Analysis:** Initial analysis has been completed to identify customers impacted by BEx tool usage.
- **Plan Transition Strategy:** Align with customer's stakeholders to define the conversion of impacted products to SAP Analysis for Office (AO) or SAC.
- **Engage APOS to check on options for current Broadcasting Scenarios**
- **Engage SAP Premium Hub or CoE:** Conduct a workshop or Proof of Concept (PoC) to evaluate Workbook conversion efforts using the mass conversion tool.
- **Execute Workbook Conversion:** Use SAP's automated conversion utility to migrate BEx Workbooks to AO, minimizing manual effort and ensuring compatibility.
- **Prepare Users for Change:** Organize End user training and communication to ensure end-users are familiar with the new tools and aware of the sunset timeline.
- **Decommission Legacy Tools:** Phase out unsupported tools post-conversion before Microsoft Office 2016/2019 and SAP BEx support ends in October 2025.

Key Takeaways

- **BEx Analyzer, BEx Workbooks and BEx Broadcaster (Pre-calculation) Reach End of Support by Oct 2025:** Due to Microsoft ending support for Office 2016 and 2019 by October 14' 2025, SAP will no longer support Excel-based BEx tools after this date.
- **BEx WAD and BW Java Stack Supported Until 2030:** BEx WAD and BW Java remain usable for customers on BW on HANA and BW/4HANA, aligned with SAP's extended maintenance timelines.
- **Migration to AO is Recommended:** SAP recommends Analysis for Office and SAC as strategic replacements for BEx tools, offering enhanced functionality and longevity.
- **Mass Conversion Tool Available:** SAP MaxAttention has developed a utility for mass conversion of BEx Workbooks to AO Workbooks, reducing effort by up to 8x compared to manual conversion.
- **Proactive follow-up by CoE:** Impacted customers have been identified, and collaboration with TQMs is essential to position the appropriate conversion services and ensure proactive engagement to avoid customer's last minute surprises.

Thank you.

Contact information:

Glen Leslie

glen.leslie@sap.com

Allan Pym

apym@apos.com



STAY CONNECTED



LINKEDIN
APOS Systems Inc.



Interested in learning more about
SAP Analytics Cloud and sharing your experience?

JOIN THE SAP ANALYTICS CLOUD GROUP TODAY!



Search for “SAP Analytics Cloud (SAC)”
on LinkedIn and request to join



QUESTIONS?

Please enter your questions in the Q&A panel.





Thank you!

Get in touch

WEBSITE

www.apos.com

EMAIL ADDRESS

info@apos.com

PHONE NUMBER

(+1) 519 894 2767

